

- MAKE A DIFFERENCE -



W E L C O M E T O

# EUROPEAN SPERM BANK



EUROPEAN  
SPERM·BANK

# THINKING OF THE FUTURE

- 02. Welcome
- 04. Our services
- 06. 360° quality focus
- 08. Donors
- 12. Screening processes

## LET'S MAKE A DIFFERENCE

European Sperm Bank is a company unlike any other - not only by virtue of what we do, but also by how we do it. So welcome, bienvenue, willkommen, benvenuti, willkommen to our unique company.

Our mission is defined as:

**"To make a true difference by giving the gift of life"**

We are dedicated to selecting and providing the best sperm, ensuring the best service, and tailoring individual solutions that meet our customers' needs. The way to achieve all this is by thinking about "The Difference". Simply by always asking - how and where can we make a difference? To our clinics, women and couples, donors, society, children and employees.

But we are also looking into the future to see how and where we can help people giving the gift of life. We are here for the long term and we want to be perceived as a responsible company that thinks ahead. That's why we like to say that we are "Thinking of the Future".

Yours sincerely



Annemette Arndal-Lauritzen



## OUR SERVICES TO YOU

We are constantly looking for new ways to improve. Our goal will always be to provide the women and couples we help with the best service, the best products, and the best help on the market.

- Free unrestricted access to our full donor profiles:**  
 By using a clinic specific login you have access to the full profile of all the donors compliant with your clinic requirements.
- Reservations:**  
 We know that most find one donor that they prefer to use for all treatments and potential siblings. To accommodate that preference, we reserve a number of straws from each donor for the use for potential siblings.
- Storage:**  
 In the nature of things we can't guarantee that stock never sells out, therefore, we offer Parent Storage, where you can store purchased sperm for as long as you so require.
- Refunding:**  
 If you no longer need the straws you have in storage, we offer to refund 75% of the straw value as long as they have not left our facilities.
- Genetic matching and counselling:**  
 We offer all prospective mothers the opportunity of having their own DNA matched against donors of their choice. Thereby we can ensure that the match is healthy and that the baby will not be disposed to any of the tested for genetic diseases.
- Exclusive Donor programme:**  
 We offer the chance to use donor sperm exclusively or semi-exclusively, guaranteeing country or worldwide exclusive access.





## 360° QUALITY FOCUS

As a sperm bank, we know it's vital you have complete trust in what we do.

Quality is, therefore, our highest priority, defining how we handle the most important aspects of our business: Sperm, service, and shipping.

### Compliance and legislation

We adhere to the directives and guidelines as defined by the EU and WHO as well as the relevant Danish authorities and authorities in local countries.

Our license to run a sperm bank is issued by the Danish Patient Safety Authority, with whom we have a very close and open dialogue strengthened by their regular inspections of our operations and procedures.



## NO COMPROMISES

Knowing that sperm quality is the most critical parameter for success, we set the bar extremely high when selecting and approving our donors.

Our screening programme is probably the most extensive and thorough in the world with only 1 donor accepted for every 20 applications.

### MOT20 only

We make a huge effort to recruit an extensive variety of men, but we only accept those with superb sperm quality and excellent health.

We know how important sperm motility is for the chances of pregnancy, which is why we only accept men who can deliver a minimum of MOT20+.

Once the donor has been accepted into our programme and donating on a regular basis, it is possible that the MOT quality will vary from time to time. The donor will not be excluded due to a lower MOT, but we offer this lower sperm quality following clinic approval.

**Every 0.5 ml straw contains 10 million MOT20 sperm for insemination.**



MOT is short for motility and means the sperm's ability to move or swim. It is counted in millions per millilitre. The count and motility is done in accordance with the WHO standard of Progressive Motility (PM). Our reason for being very particular about MOT20+ is that many clinics and researchers find that it offers the best chance of pregnancy.

Sperm counts may vary by up to 20% as a result of human and technical factors such as the individual counting, the laboratory tools used and the time/temperature of thawing.

## MAKING IT EASY FOR YOU TO FIND THE RIGHT DONOR

At European Sperm Bank, we provide you with all you need to know in order to find the perfect donor for your family.

Our extensive donor profiles are engaging and easy to read and they contain all information that you might want to have about the donor – from his special skills and his personality to a thorough account of his family and its health history. We want you to feel happy and confident about your choice. Naturally, we are available if you need any further assistance – contact us by e-mail, chat or phone.

### Five easy steps

Selecting a donor is an important, personal and life-changing decision.

We have an easy 5-step approach to take you through the process as smoothly as possible.

When you log on to [www.europeanspermbank.com](http://www.europeanspermbank.com), you can search amongst hundreds of donors based on the criteria that are important to you and you can choose to view as much or as little information as you desire.



#### Step 1

Search the database and seek out your 3-4 favourite donors



#### Step 2

Decide how much detailed information you want



#### Step 3

Select your favourite donor



#### Step 4

Check date and time with your clinic and place your order



#### Step 5

We ship to your clinic in time for your treatment

## DONOR INFORMATION



### Donor profile

Includes extensive information on the donor including physical appearance, health information, medical history, personality traits, hobbies, key skills, interests and occupation.



### Family history

Includes extensive information on the donor's family including health information and medical history.



### Audio interview

A casual conversation with the donor on different subjects 10-15 min long.



### Baby photo

A photo of the donor as a baby.



### Keirsey test

Classification of the donor's personality.



### First impression

Our staff's first hand personal impression of the donor.

## MEET OUR AMAZING DONORS

We are very focused on finding the right sperm donors and it's our goal to be able to offer a broad selection of donors. A few facts about our sperm donors:

- Physically and psychologically healthy young men with excellent sperm quality
- All ethnic backgrounds
- All shapes and sizes
- 18-40 years, average 27
- All types of educational backgrounds and jobs
- 60% students
- Open/non-contact: 60/40%
- 22% have own children
- Only 5-7% of all donor applicants make it through the screening process.

## WHY OUR DONORS CHOOSE TO DONATE

We get to talk to our donors a lot and so we've uncovered a lot about why they choose to donate.

The full donor profiles describe the individual sperm donor's motivation to become a donor, but in general there is a clear ABC-pattern. Our donors usually donate for several of these reasons.

### The ABC of donor motivation

**Altruism** – the primary reason! It simply makes the donors feel good to help others and many are proud to be life changers.

**Biological reasons** – enjoying the thought that a part of them lives on in various places across the world.

**Compensation** – donating sperm is not about the money as the donation fee is set as a compensatory fee by the Danish authorities, but to many donors it is a valued supplement earned in the course of helping others.

**"I have not found the woman for me yet, and somehow it is great to know that even if I should never have kids of my own, there will be a part of me out there in the world."**  
// Donor Evan





## PROBABLY THE BEST SCREENING PROCESS IN THE WORLD



### Step 1

Online application



### Step 2

First sample



### Step 3

Interview and  
second sample



### Step 4

Evaluation by  
our geneticist



### Step 5

Physical  
examination



### Step 6

Blood sample for  
genetical screening,  
urine sample and  
personality test

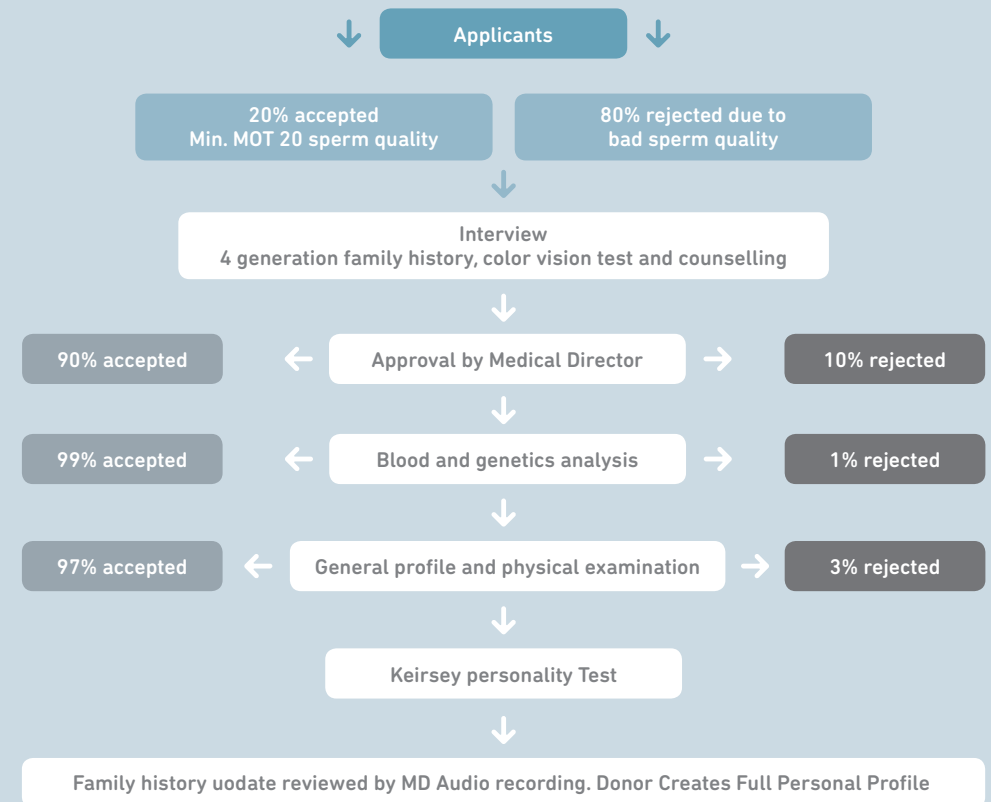


### Step 7

Counselling,  
audio and donor  
profile

Core to our approach is the approval of donor candidates by our Medical Director, a clinical genetic specialist, through evaluation of all tests and information. This evaluation follows an assessment which includes face-to-face meetings, interviews and medical tests.

This model provides a simple overview to help you understand what our donors undergo:



Technology changes the conditions for how and what we are able to screen. We take active part in this evolution working with the Danish Patient Safety Authority and international organisations.

Only 5-7% of all donor applicants are accepted

80% are rejected due to sperm quality

10% are rejected due to medical issues



3-5% are rejected due to other reasons





## WHAT WE SCREEN FOR

The donors are selected based on a number of parameters in the screening process:

- Sperm quality and sperm count
- Genetic Risk Assessment based on third to fourth-generation family medical history reviewed by a trained genetic specialist
- Physical examination by a trained GP
- Genetic testing and testing for infectious diseases
- Personality test (Keirsey)

In case we detect any active infections, a donor will not be able to donate. We also keep track of our donors' travelling patterns and in cases where we find it relevant we might do further testing.

### Testing for infectious diseases (screening of blood and urine):

- ABO-Rh blood typing
- Biochemistry panel
- Complete blood count
- HIV I/II
- HTLV I/II
- Hepatitis B
- Hepatitis C
- Syphilis
- CMV IgG/IgM
- Chlamydia
- Gonorrhoea

### Additional testing in specific cases (based upon donor's travel activities):

- Zika
- West Nile Fever

### Physical examination by a trained GP

A GP performs a thorough examination of organ systems, neurological examination, posture, skeletal malformations, skin diseases and eyesight.



# GENETIC RISK ASSESSMENT

The initial genetic risk assessment is carried out by our Medical Director and genetic specialist.

Donors who have an abnormal chromosome analysis (karyotype) and/or are carriers of any of the diseases mentioned below are not accepted in our donor programme. In specific cases, we conduct further genetic testing than our general genetic programme.

## Genetic risk assessment and testing

### All prospective donors

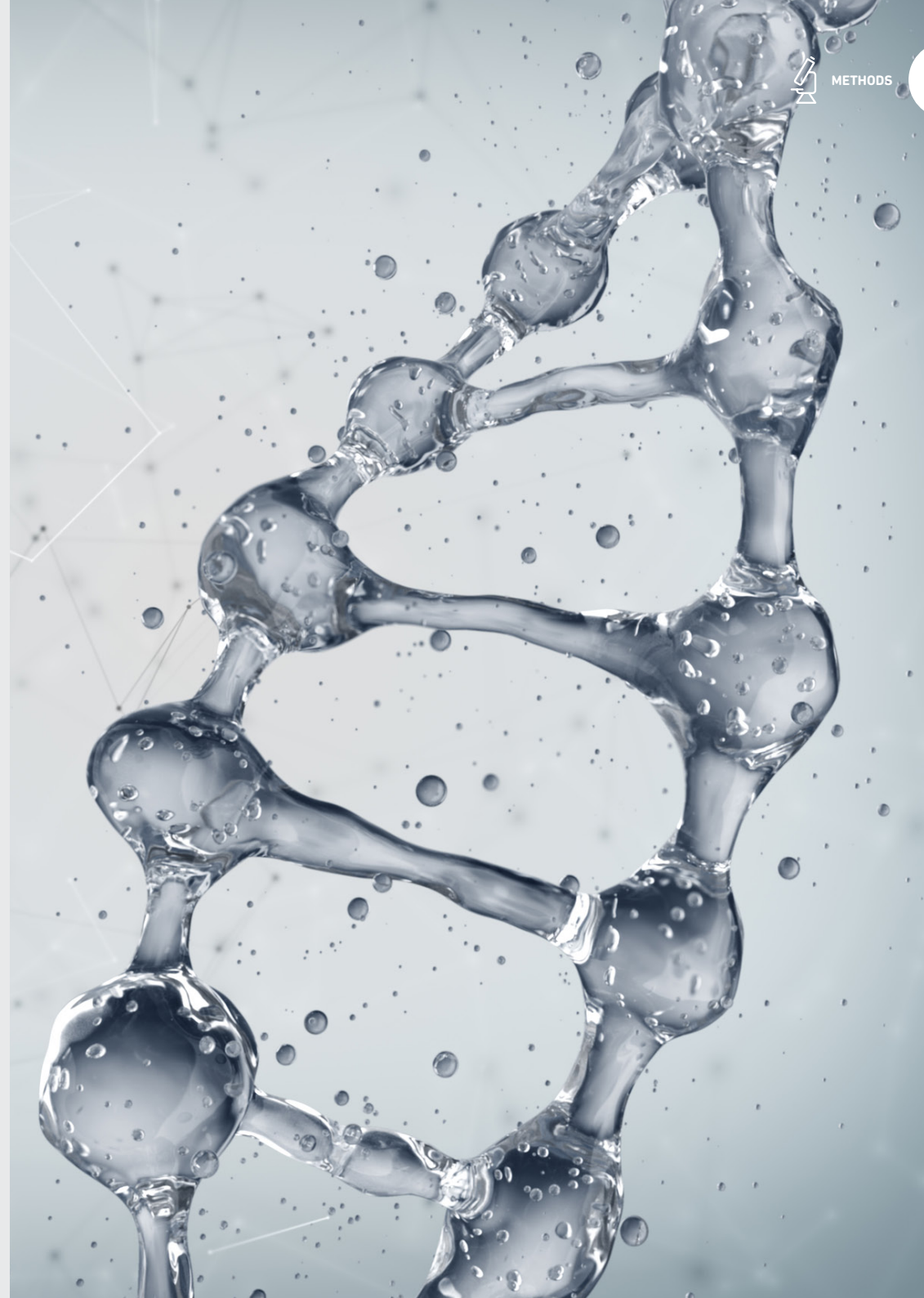
- Third to fourth-generation family medical history reviewed by a trained genetic specialist

### Autosomal recessive diseases:

- Cystic fibrosis screening for mutations in the cystic fibrosis gene.
- Chromosome analysis (karyotyping)
- SMA (spinal muscular atrophy) in all active donors from January 2015.
- Non-syndromic hearing loss and deafness (GJB2 related) in all active donors from June 2016.
- Thalassaemia and sickle cell disease (screening by HPLC and red blood cell haematology). Less than 1 in 1,000 are carriers for this disease in the Northern European population.

### Prospective donors of Jewish or French-Canadian ancestry

- Bloom syndrome
- Canavan Disease
- Familial Dysautonomia
- Fanconi Anemia type C
- Gaucher Disease
- Mucopolysaccharidosis type IV
- Niemann-Pick Disease
- Tay-Sachs Disease





# E U R O P E A N S P E R M • B A N K

Founded in Copenhagen, Denmark, European Sperm Bank is dedicated to making a difference by helping woman and couples achieve pregnancy. We are committed to selecting and providing the best sperm, ensuring the best service and tailoring individual solutions that fit you and your needs.